

Department of Engineering  
Dan Gaillet, P.E., County Engineer


3137 South Liberty Street, Canton, MS 39046  
Office (601) 790-2525 FAX (601) 859-3430

## MEMORANDUM

October 31, 2018

To: Sheila Jones, Supervisor, District I  
Trey Baxter, Supervisor, District II  
Gerald Steen, Supervisor, District III  
David Bishop, Supervisor, District IV  
Paul Griffin, Supervisor, District V

From: Dan Gaillet, P.E.  
County Engineer

Re: Sink Hole  
111 Chartres Drive  
Belle Terre Subdivision 

A sink hole has formed at 111 Chartres Drive due to the failure of pipe that carries roadway storm water from Chartres Drive, across property at 111 Chartres Drive.

The Engineering Department has determined that the pipes have separated which is causing a dangerous sink hole. However, a full determination of damage will take place after authorization is granted to work within this drainage easement.

It is the recommendation of the Engineering Department that repairs be made to ensure that storm water is moved from point-to-point to prevent damage to the roadway and further damage the storm water system.

Therefore, it is in the best interest of the County and the public's health, safety and welfare to make the repairs, based on:

- Separated storm water pipes;
- Water is unable to flow freely off of Chartres Drive; and
- A large sink hole has formed over the pipe failure.

---

SHEILA JONES  
District One

TREY BAXTER  
District Two

GERALD STEEN  
District Three

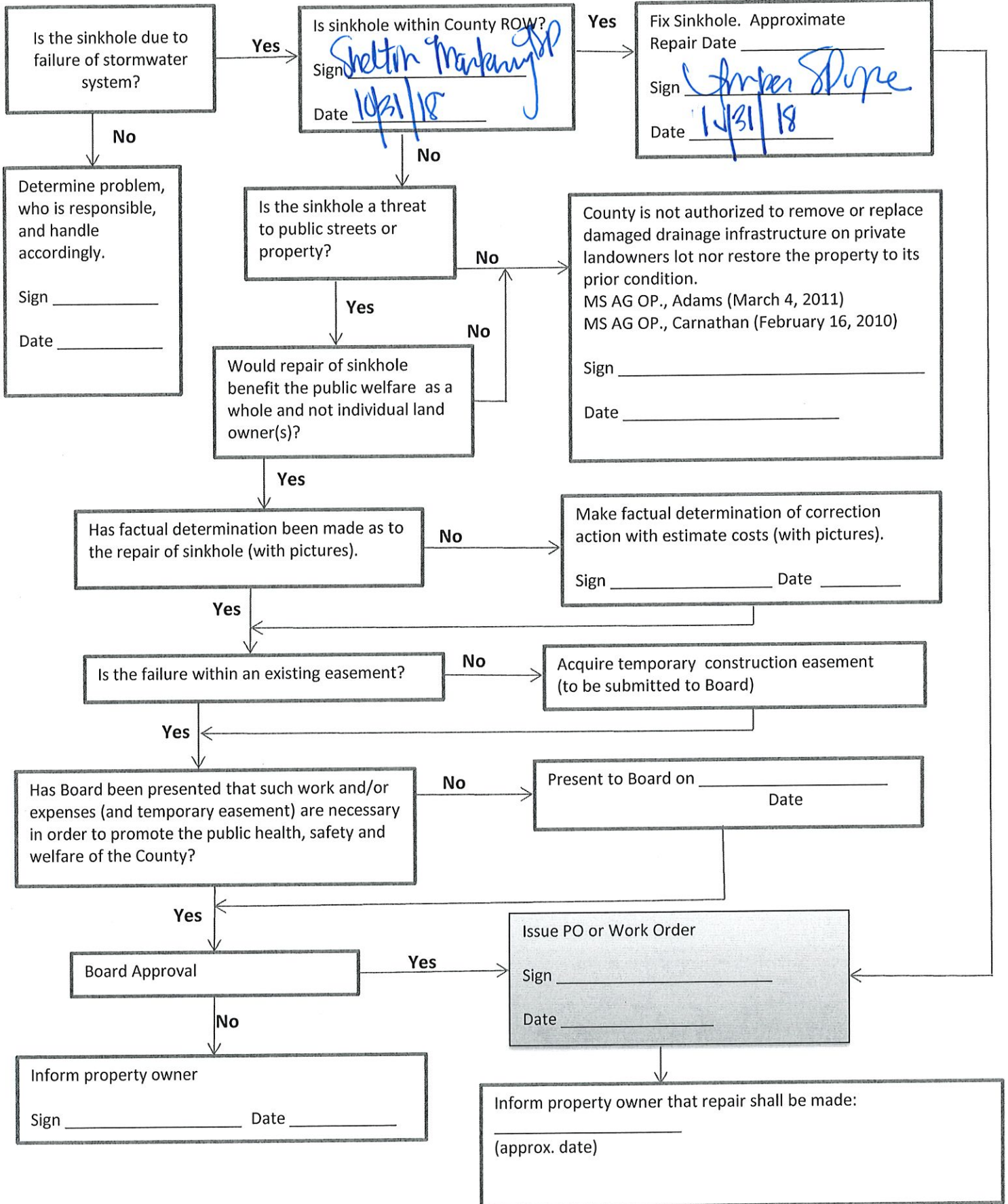
DAVID BISHOP  
District Four

PAUL GRIFFIN  
District Five

# SINKHOLE FLOW CHART

LOCATION: 111 Chartres Dr.

DATE: 10/31/18





111 Anartres




Department of Engineering  
Dan Gaillet, P.E., County Engineer

3137 South Liberty Street, Canton, MS 39046  
Office (601) 790-2525 FAX (601) 859-3430

## MEMORANDUM

October 31, 2018

To: Sheila Jones, Supervisor, District I  
Trey Baxter, Supervisor, District II  
Gerald Steen, Supervisor, District III  
David Bishop, Supervisor, District IV  
Paul Griffin, Supervisor, District V

From: Dan Gaillet, P.E.   
County Engineer

Re: Sink Hole  
108 Belle Terre Drive  
Belle Terre Subdivision

A sink hole has formed at 108 Belle Terre Drive due to the failure of pipe that carries roadway storm water from Belle Terre Drive, across property at 108 Belle Terre Drive.

The Engineering Department has determined that the pipes have separated which is causing a dangerous sink hole. However, a full determination of damage will take place after authorization is granted to work within this drainage easement.

It is the recommendation of the Engineering Department that repairs be made to ensure that storm water is moved from point-to-point to prevent damage to the roadway and further damage the storm water system.

Therefore, it is in the best interest of the County and the public's health, safety and welfare to make the repairs, based on:

- Separated storm water pipes;
- Water is unable to flow freely off of Belle Terre Drive; and
- A large sink hole has formed over the pipe failure.

---

SHEILA JONES  
District One

TREY BAXTER  
District Two

GERALD STEEN  
District Three

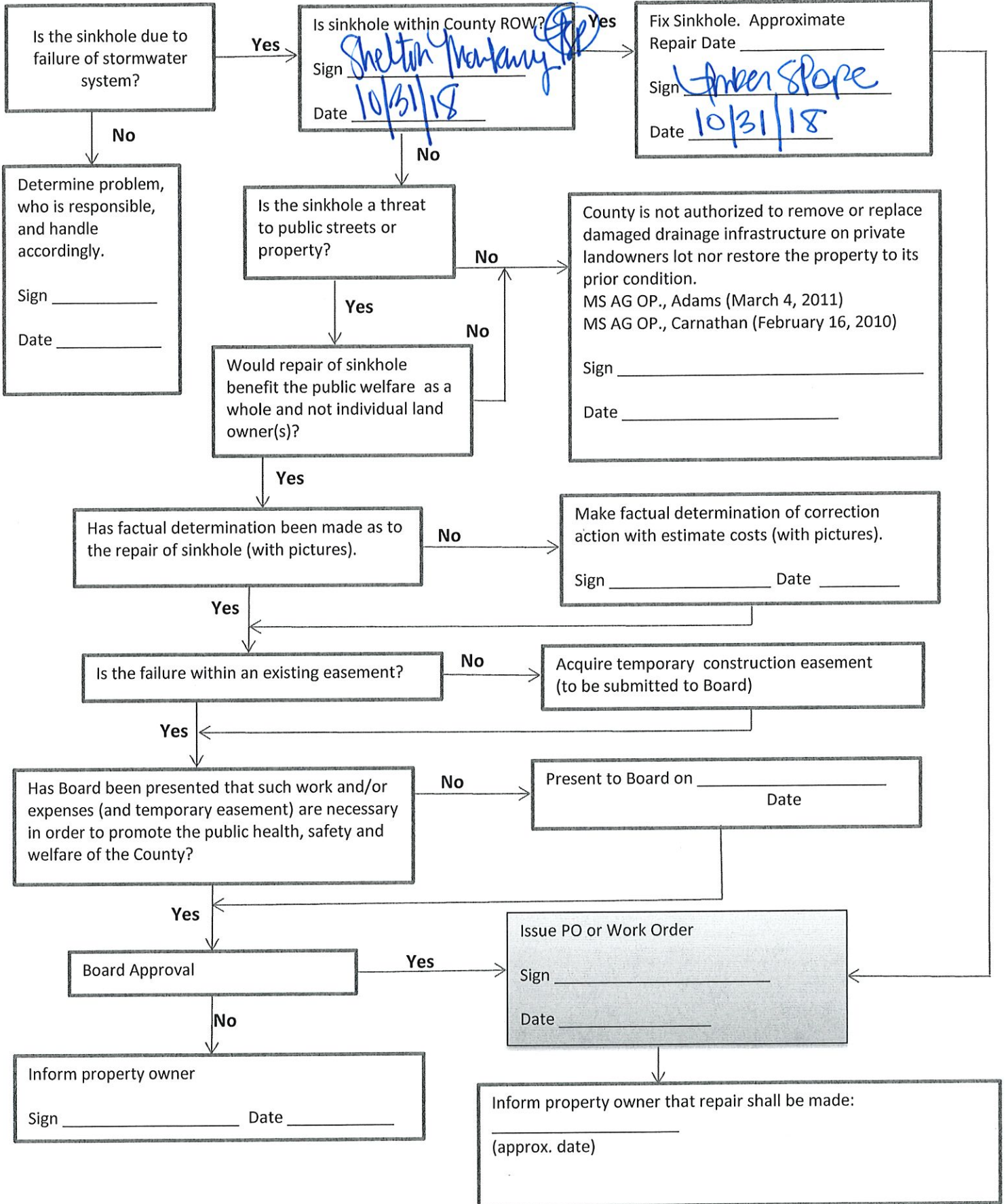
DAVID BISHOP  
District Four

PAUL GRIFFIN  
District Five

# SINKHOLE FLOW CHART

LOCATION: 108 Belle Terre Dr.

DATE: \_\_\_\_\_














Department of Engineering  
Dan Gaillet, P.E., County Engineer

3137 South Liberty Street, Canton, MS 39046  
Office (601) 790-2525 FAX (601) 859-3430

## MEMORANDUM

October 31, 2018

To: Sheila Jones, Supervisor, District I  
Trey Baxter, Supervisor, District II  
Gerald Steen, Supervisor, District III  
David Bishop, Supervisor, District IV  
Paul Griffin, Supervisor, District V

From: Dan Gaillet, P.E.   
County Engineer

Re: Sink Hole  
116 Belle Terre Drive  
Belle Terre Subdivision

A sink hole has formed at 116 Belle Terre Drive due to the failure of pipe that carries roadway storm water from Belle Terre Drive, across property at 116 Belle Terre Drive.

The Engineering Department has determined that the pipes have separated which is causing a dangerous sink hole. However, a full determination of damage will take place after authorization is granted to work within this drainage easement.

It is the recommendation of the Engineering Department that repairs be made to ensure that storm water is moved from point-to-point to prevent damage to the roadway and further damage the storm water system.

Therefore, it is in the best interest of the County and the public's health, safety and welfare to make the repairs, based on:

- Separated storm water pipes;
- Water is unable to flow freely off of Belle Terre Drive; and
- A large sink hole has formed over the pipe failure.

---

SHEILA JONES  
District One

TREY BAXTER  
District Two

GERALD STEEN  
District Three

DAVID BISHOP  
District Four

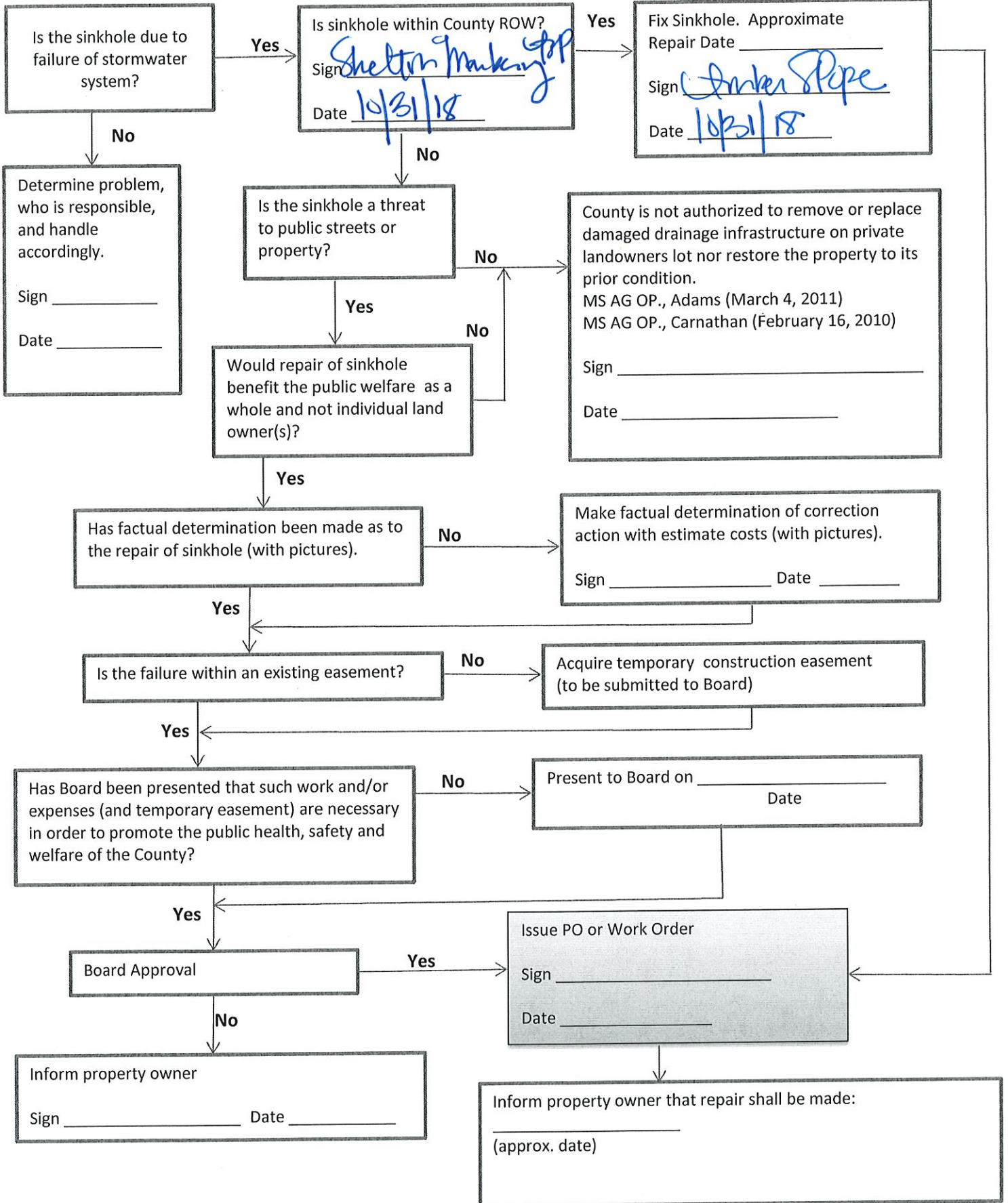
PAUL GRIFFIN  
District Five



# SINKHOLE FLOW CHART

LOCATION: 116 Belle Terre Dr

DATE: 10/31/2018





# UTILITY CONSTRUCTORS, INC.

Utility & Commercial Contractors

## Quote

October 24, 2018

To: Shelton Marberry  
Madison County Board of Supervisors  
125 W. North Street  
Canton, MS 39046

Contractor:  
Utility Constructors, Inc.  
P.O. Box 13627  
Jackson, MS 39236

Reference: ~~Lots~~ <sup>Chartres Dr.</sup> 111, 108 and ~~109~~ <sup>116</sup> on Belle Terre Drive

This quote is to dig up existing storm pipe on Lots listed above to replace and repair as necessary, which also includes any sidewalk replacing if needed, in Belle Terre Subdivision in Madison County. MS.

All Labor, Material, Equipment and etc. to perform work

**Total Lump Sum**

**\$30,892.00**

Accepted By

Company: \_\_\_\_\_

Signature: \_\_\_\_\_

Print: \_\_\_\_\_

Date: \_\_\_\_\_

P.O. No: \_\_\_\_\_

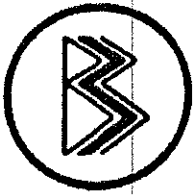
Terry N. Lovelace  
UCI, Inc.



Payment terms are net 30 days.

Proposal valid for 30 days. Utility Constructors requires 7 days' notice to schedule manpower, equipment and One-Call's.





**BLURTON, BANKS & ASSOC., INC.**  
**CONSTRUCTION, SITE DEVELOPMENT**  
**SINCE 1974**

P.O. BOX 12448 • 6055 RIDGEWOOD ROAD, STE D  
JACKSON, MISSISSIPPI 39211  
PH. 601-957-2055 FAX. 601-977-0442

October 23, 2018

Mr. Shelton Marberry  
Madison County

RE: Belle Terre 18" Storm Drain Repair

Dear Mr. Marberry:

We are writing this letter to submit our cost on the above referenced project.

We propose to repair the existing storm drain at 108 and 109 Belle Terre Drive and 111 Chartiers Drive. We will remove and replace 20' of storm drain and concrete sidewalk at each location with the total cost for all three of \$32,500.00.

Please do not hesitate to call if you have any questions.

Sincerely,

**BLURTON, BANKS & ASSOC., INC.**

Ed Blurton  
President

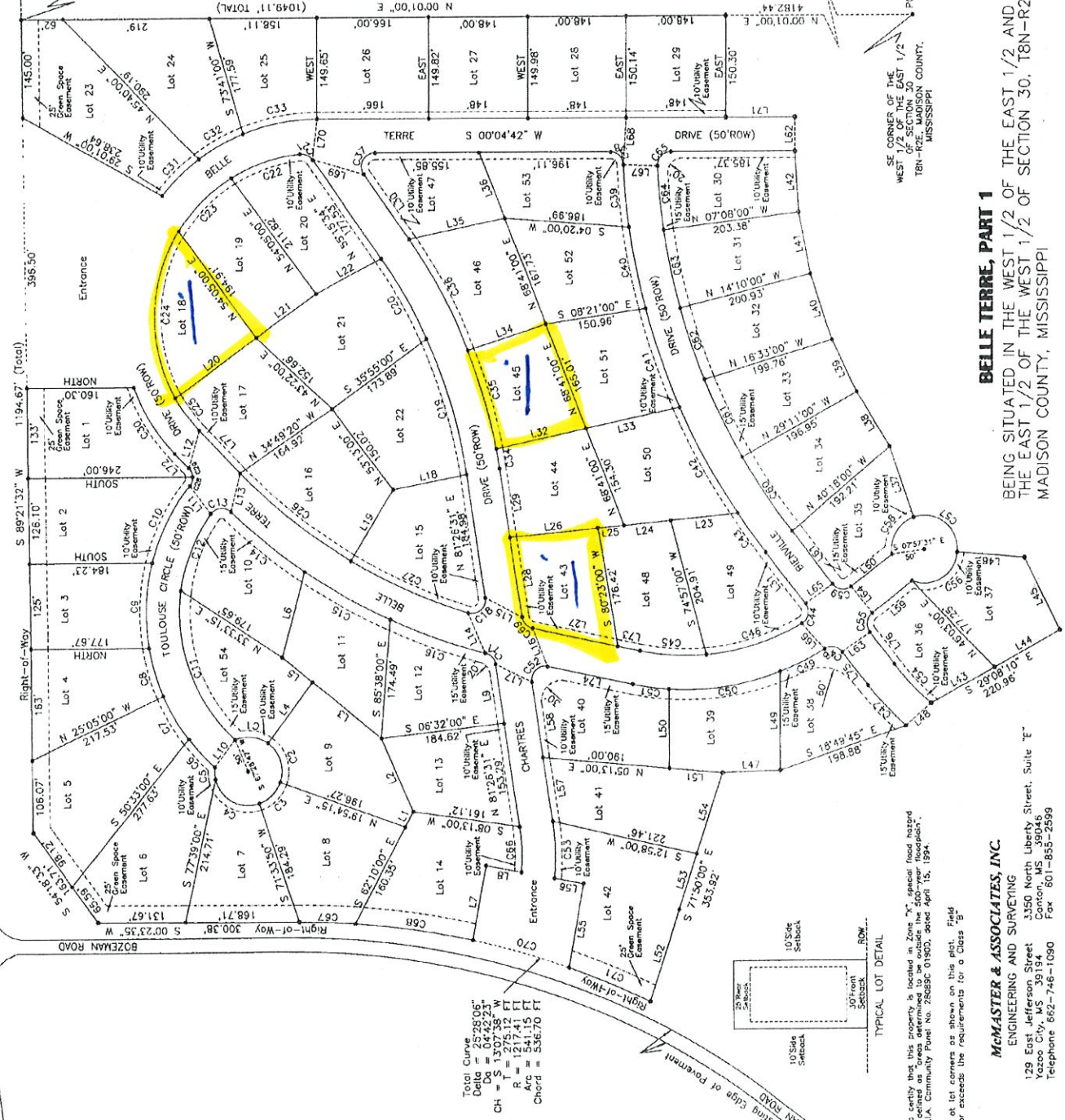
EB:ks



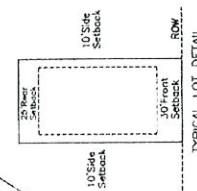
POINT OF BEGINNING  
Intersection of the  
Right-of-Way of  
the West 1/2  
of Section 30,  
18N-R2E, Madison Co.,  
MS with the Southerly  
Right-of-Way of  
Claret Street Road

Class "B" Survey  
Bearings Based On Solar Observation  
Taken On April 5, 2003

Our Job No. M-1373  
POC - Point of Commencement  
POB - Set of Beginning  
SP - Set Iron Pin  
FIP - Found Iron Pin  
\* Iron Pin in Concrete



Total Curve  
Delta = 252°06'  
Dd = 04'42.23'  
CH = S 130°38' W  
R = 1217.41 FT  
Arc = 541.15 FT  
Chord = 536.70 FT



TYPICAL LOT DETAIL

Note: This is to certify that this property is located in Zone "X" general flood hazard area, which is defined as "area determined to be outside the 500-year floodplain" according to F.I.A. Community Panel No. 28089C 0190D, dated April 15, 1994.

Note: Iron pins set at lot corners 95 shown on this plat. Field measurements at corners are required for a Class "B" survey.

**McMASTER & ASSOCIATES, INC.**  
ENGINEERING AND SURVEYING  
129 East Jefferson Street  
Yazoo City, MS 39394  
Telephone 662-746-1090 Fax 601-855-2599

**BELLE TERRE, PART 1**  
BEING SITUATED IN THE WEST 1/2 OF THE EAST 1/2 AND  
THE EAST 1/2 OF THE WEST 1/2 OF SECTION 30, 18N-R2E,  
MADISON COUNTY, MISSISSIPPI

SE CORNER OF THE EAST 1/2  
WEST 1/2 OF SECTION 30,  
18N-R2E, MADISON COUNTY,  
MISSISSIPPI

Existing Edge of Pavement

Entrance

Entrance

Entrance

Entrance